

TRADE FAIR CONTAINER



TRADE FAIR CONTAINER

Example of a variant with 2 floors, with deck

Description

The container structure is composed of four modified 20-foot high-cube containers, each featuring a fully glazed side with an integrated entrance door.

Two containers with the door on the left and two with the doors on the right side.

It includes three terrace decks and a 1.2-meter-wide staircase for easy access.

Each container has a 1.0-meter-wide entrance door at the front.

Terrace Decks & Materials

Two decks match the container size, while one is oversized, allowing the staircase to be placed alongside the structure.

All decks are clad in high-quality Bankirai wood, offering both durability and aesthetic appeal.

The containers, terrace decks, stairs, and railings comply with event safety standards.

Designed as a flexible architectural framework, this structure supports a variety of presentation concepts, which can be enhanced with the right technology. Its efficient design allows for assembly and dismantling within a single day, making it an ideal solution for dynamic event setups.

Construction

The ISO containers consist of a rigid steel frame and infill made of corrugated sheet metal. Front side can be opened using two doors.

At the points where the corrugated metal walls are removed for the glass façade, reinforcements are welded in place according to structural calculations.

These reinforcements consist of four RR 60/80/3 mm steel profiles and a U 200 longitudinal beam, restoring the original load-bearing system.

As freight containers, the components have a standardized, structurally stable connection system. These connections are made using Twistlock fasteners at the corner points (container heads).

Interior Construction / Materials

Carpets Or PVC can be laid over the existing floor structure of the containers as a new flooring.

The interior walls of the containers are made of a wooden stud frame with double paneling of 12mm OSB / 12mm cement bonded panels, and insulated with rockwool (A fire rating).

Infrastructure / Technical Installations

The container unit can be connected to existing water supply and drainage systems as well as electrical connections. If one or more connections are not available, external solutions such as a generator, freshwater tank, or wastewater tank can be installed.

Each fitted-out container has seven electrical circuits and an electrical baseboard with double sockets and network ports. Additional power outlets for the air-conditioning unit and other mobile IT devices are integrated into the sideboard. Hanging points and connections for flat screens are pre-installed in the ceiling.

Built-in downlights provide lighting for each container.

Fire Protection

Each converted container is equipped with two sprinklers. Additionally, each container has a battery-backed emergency light. Six fire extinguishers are placed at designated positions throughout the container unit.

The interior construction was carried out using flame-retardant materials.

TRADE FAIR CONTAINER

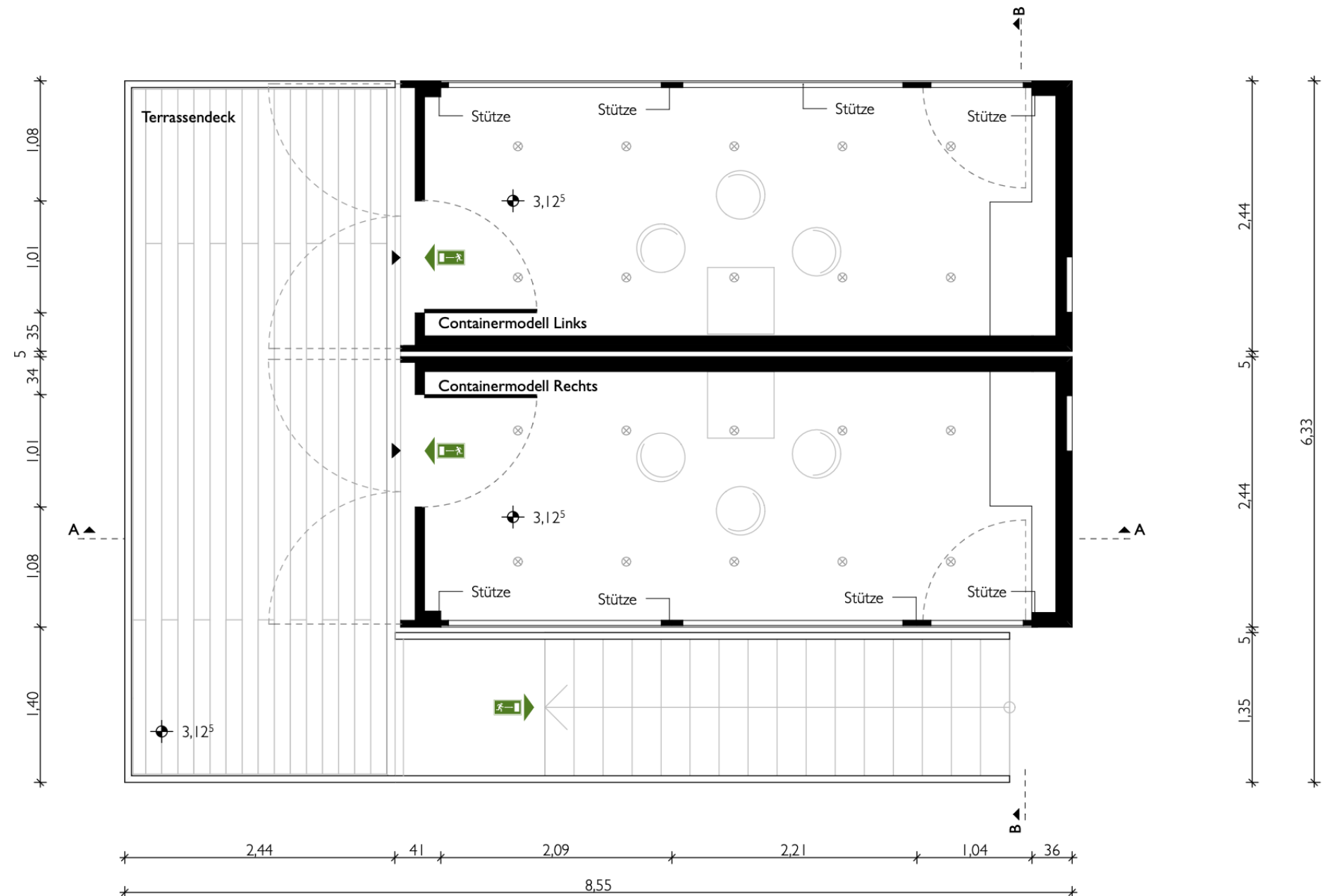


Example of a variant with 2 floors, with deck

TRADE FAIR CONTAINER

UPPER FLOOR

Floor area $53,30\text{m}^2$
Usable area $23,70\text{m}^2$
Deck area $15,00\text{m}^2$



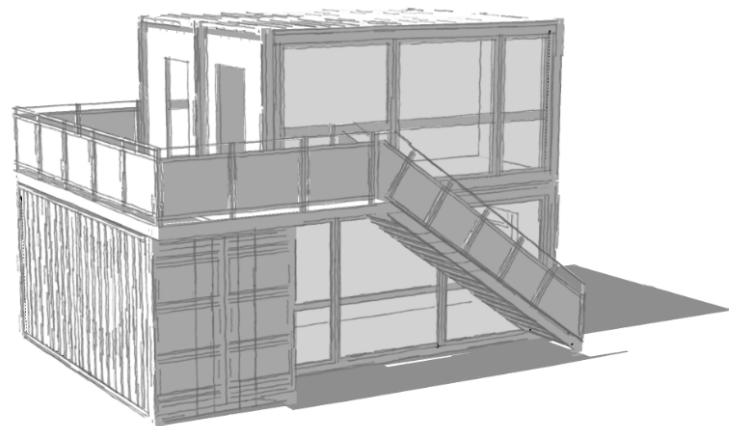
Artdepartment-Berlin GmbH

artdepartment

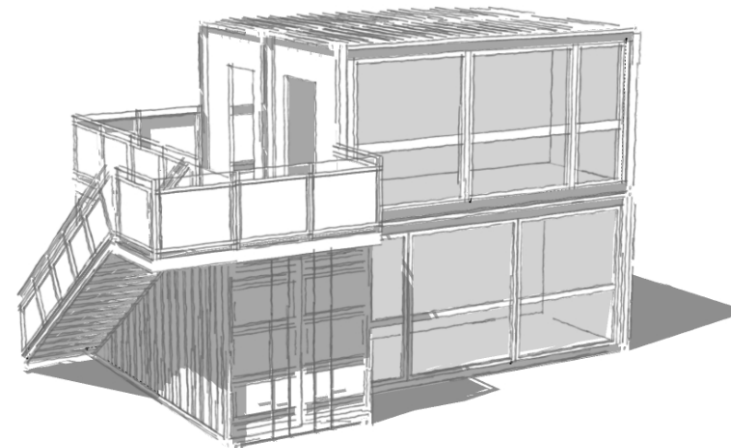
phone +49 172 380 30 55
mail@artdepartment-berlin.com
www.artdepartment-berlin.com
www.2x20ft.com

TRADE FAIR CONTAINER

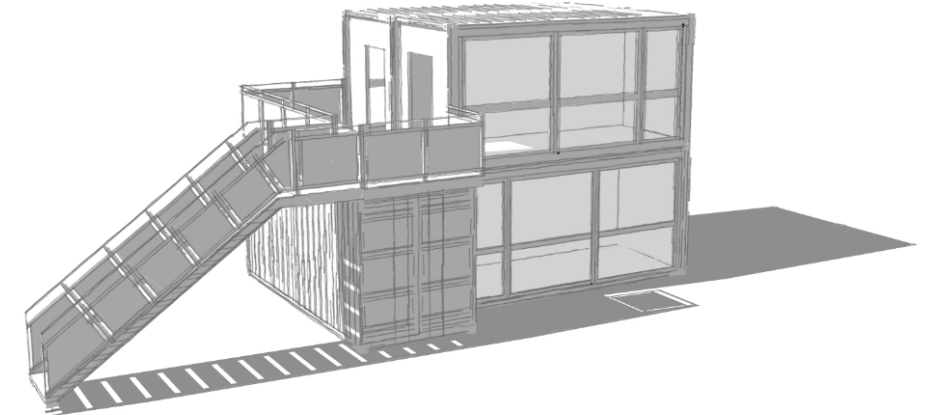
Variant 1



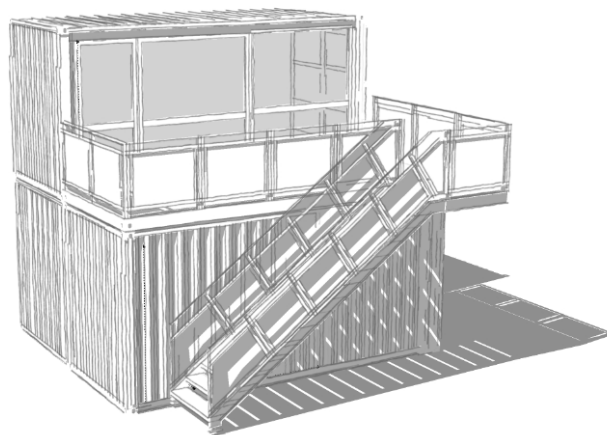
Variant 2



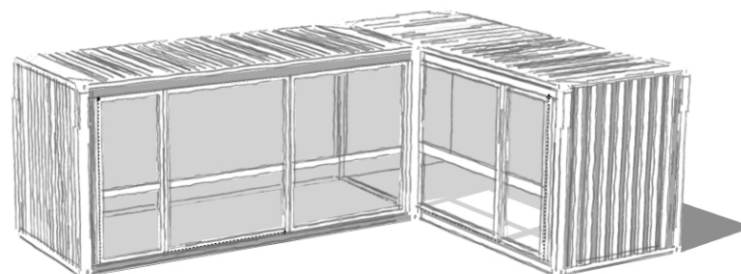
Variant 3



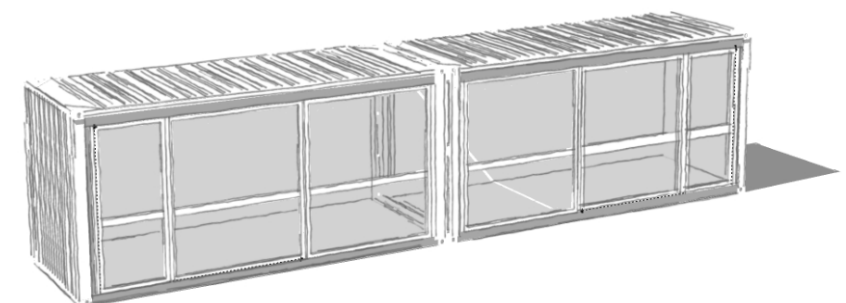
Variant 4



Variant 5



Variant 6



Artdepartment-Berlin GmbH



phone +49 172 380 30 55
mail@artdepartment-berlin.com
www.artdepartment-berlin.com
www.2x20ft.com