

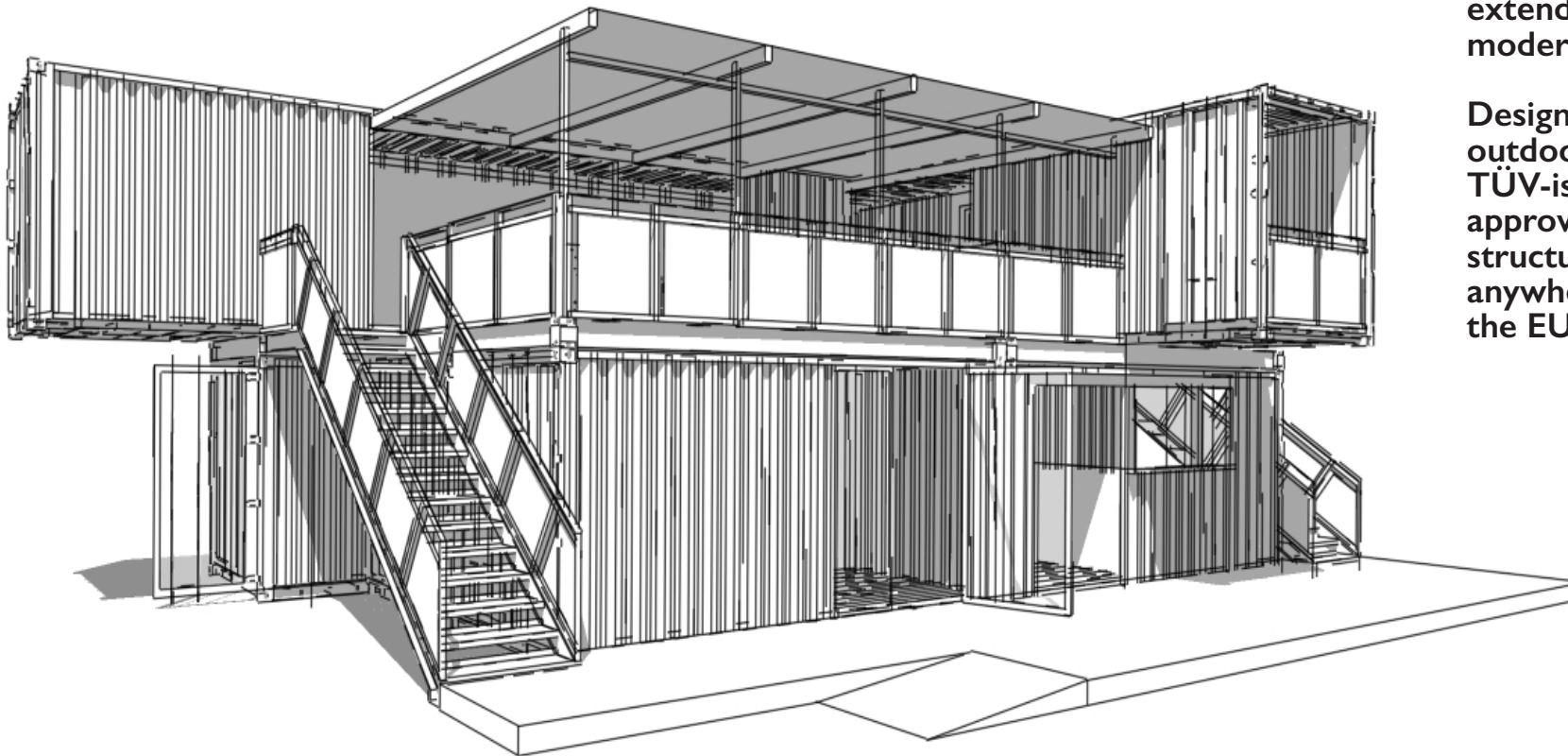
# CLUB HOUSE

## The CLUB HOUSE

It is a versatile event structure that can be quickly assembled and dismantled, making it ideal for festivals, trade fairs, and catering venues.

The ground floor consists of six modified 20-foot containers, topped by an open terrace deck. A striking architectural element, the 40-foot and 30-foot containers extend from the sides, adding to its modern and distinctive design.

Designed for both indoor and outdoor use, it comes with a valid TÜV-issued book (implementation approval). As a certified temporary structure, it can be set up anywhere in Germany and most of the EU.





# CLUB HOUSE

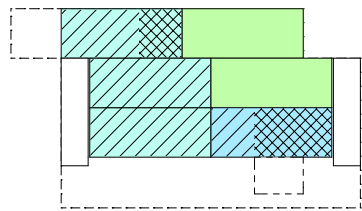
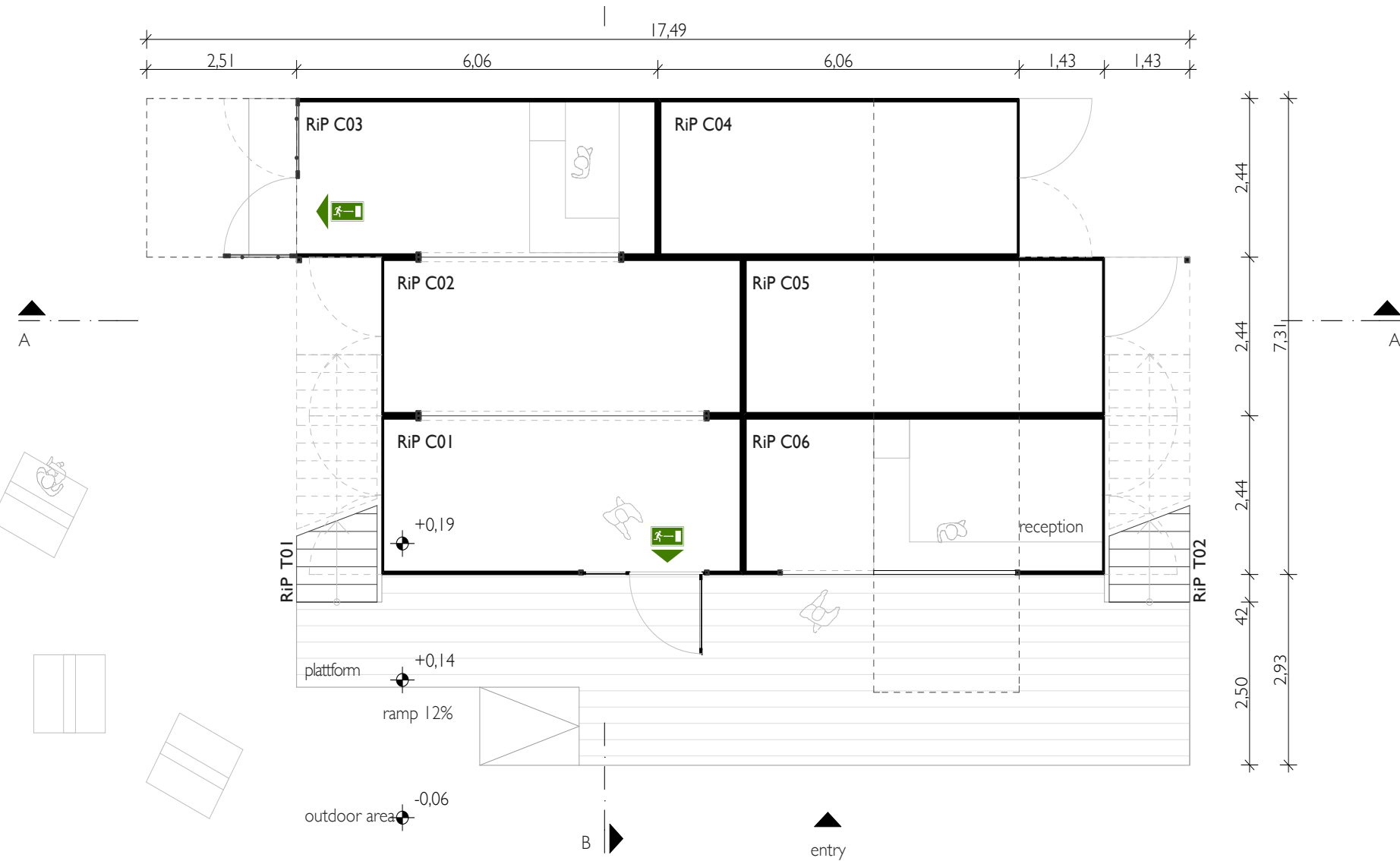




FLOOR PLAN

CLUB HOUSE

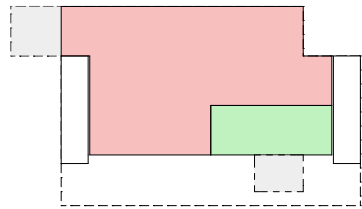
On the ground floor, there is a separate reception container, along with three containers forming an enclosed club area. Behind these, there are two potential storage containers. Outer staircases on the left and right lead to the upper lounge area with a bar.



effective area GF		
reception	14 m <sup>2</sup>	
lounge	42 m <sup>2</sup>	
storage	28 m <sup>2</sup>	
total	84 m <sup>2</sup>	

visitor area	42,8 m <sup>2</sup>
staff area	13,9 m <sup>2</sup>

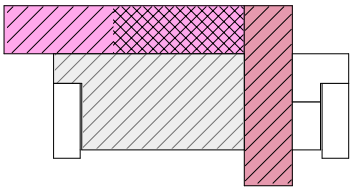
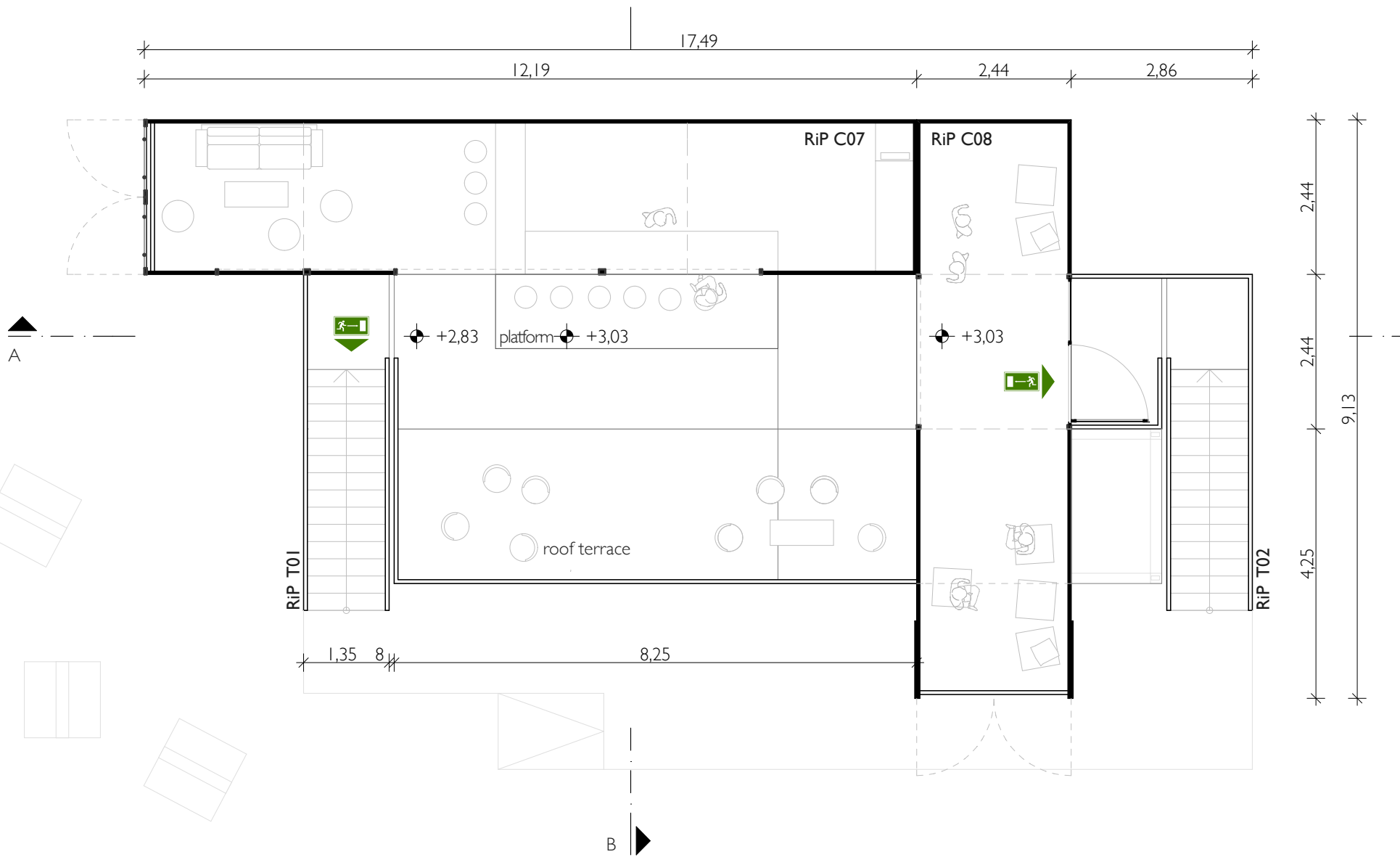
gross floor area GF		
area A	73,8 m <sup>2</sup>	
covered and all sides enclosed in full height		
area B	14,8 m <sup>2</sup>	
covered, not all sides enclosed in full height		
area C	not covered	
total	88,6 m <sup>2</sup>	



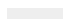




FLOOR PLAN


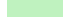
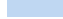
CLUB HOUSE

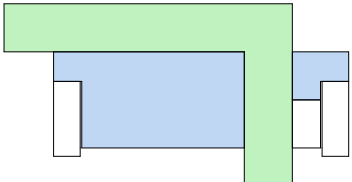
The containers on the first floor, which extend sideways, can be used as a bar and lounge. The area is primarily used as a terrace and is accessible via two external staircases. The roof's load-bearing capacity is ensured by platforms that rest on the ground-floor containers and are secured with twist locks.



effective UF		
	bar / lounge	28 m <sup>2</sup>
	lounge	22 m <sup>2</sup>
	roof terrace	42 m <sup>2</sup>
	<b>total</b>	<b>92 m<sup>2</sup></b>

	visitor area	74,8 m <sup>2</sup>
	staff area	15,4 m <sup>2</sup>

gross floor area UF		
	area A	
	covered and all sides enclosed in full height	
	area B	52 m <sup>2</sup>
	covered, not all sides enclosed in full height	
	area C	48 m <sup>2</sup>
	not covered	
	<b>total</b>	<b>100 m<sup>2</sup></b>





PREVIOUS EVENT EXAMPLE

CLUB HOUSE





## SMALL EVENT EXAMPLE

# CLUB HOUSE





## CONSTRUCTION:

- 8 container in different sizes
- 6pcs 20ft container
- 1pc 40ft container
- 1pc 30ft container
- 6pcs 20ft container platforms
- 2pcs stairs, 1,20m walking width
- railing segments: equipped with bar grates or printing plates
- 1pc roof construction including tarpaulin
- load distribution panels in various sizes and with wooden relining

## CONTAINERS:

### The ground floor containers are equipped with:

#### Floor:

- existing container floor refurbished / oiled

#### Expansion:

- Bar or reception area made of a steel frame construction QR 30 mm

#### Electrification:

- 1pc electrical connection for 32 amp in and out
- potential equalization
- 1pc fuse box with UV security feature
- 5pcs battery buffered emergency lights  
(1pc in container C01, C03 and C04-C06)
- 6pcs sockets (4pcs in container C01, 1pc in container C03 and C04)
- cable trays in containers C01-04

#### Lighting:

- steel tubes 48 mm for lighting in the containers C01-C04
- moisture-proof luminaires in container C05 and C06

### The upper floor containers are equipped with:

#### Floor:

- aluminium chequer plate

#### Expansion:

- 1pc bar counter made of a steel frame construction  
QR 30 mm (blinds from old building doors)

#### Electrification:

- 1pc electrical connection for 32 amp in and out
- potential equalization
- 1pc fuse box with UV security feature
- 2pcs battery buffered emergency lights  
1pc in Ccontainer C07 and C08
- 8pcs sockets  
4pcs in container C07 and C08

#### Lighting:

- steel tubes 48 mm for lighting in the containers C07 und C08

## PLANNING DOCUMENTS:

#### Implementation approval book:

- TÜV (German Association for Technical Inspection)  
approved valid test book with certified  
structural analysis and fire protection concept (Execution Approval)

Artdepartment-Berlin GmbH

**artdepartment**

phone +49 172 380 30 55  
mail@artdepartment-berlin.com  
www.artdepartment-berlin.com  
www.2x20ft.com