



CLUB HOUSE

artdepartment

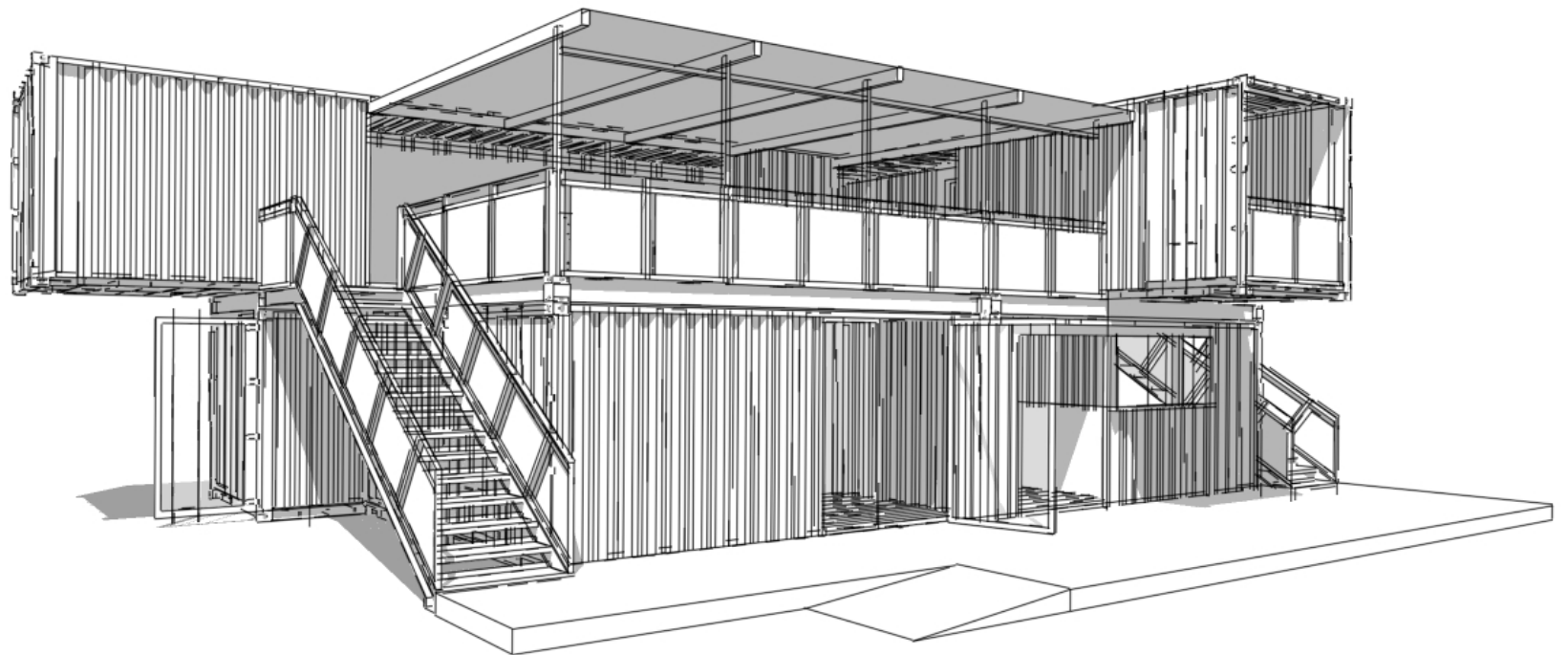
2X20FT
experts in container architecture

CLUB HOUSE

The CLUB HOUSE is an event building that can be quickly assembled and disassembled. It is suitable for indoor and outdoor use and can be used anywhere in Germany according to TÜV (German Association for Technical Inspection).

Six modified 20ft containers form the ground floor. Above it is the open deck. The laterally protruding 40ft and 30ft containers complete the modern and unusual look.

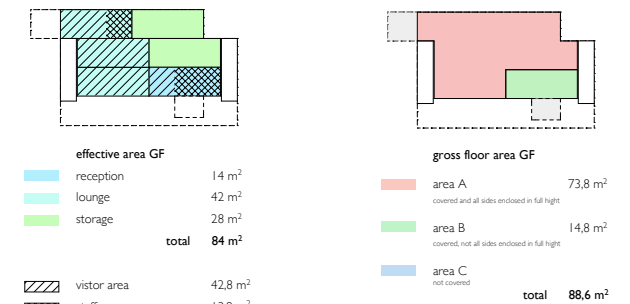
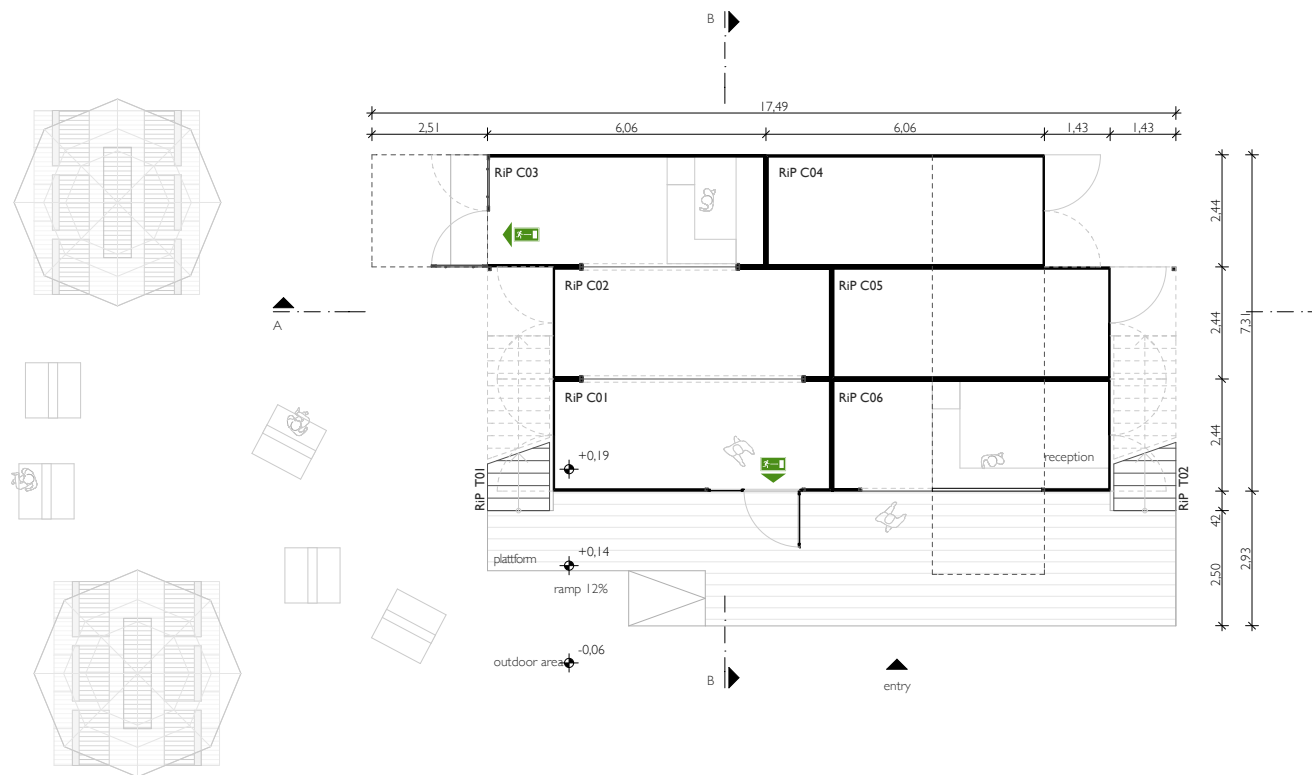
Individually altered and painted in your desired color, the CLUB HOUSE can be customized according to your own ideas.



CLUB HOUSE

GROUND FLOOR

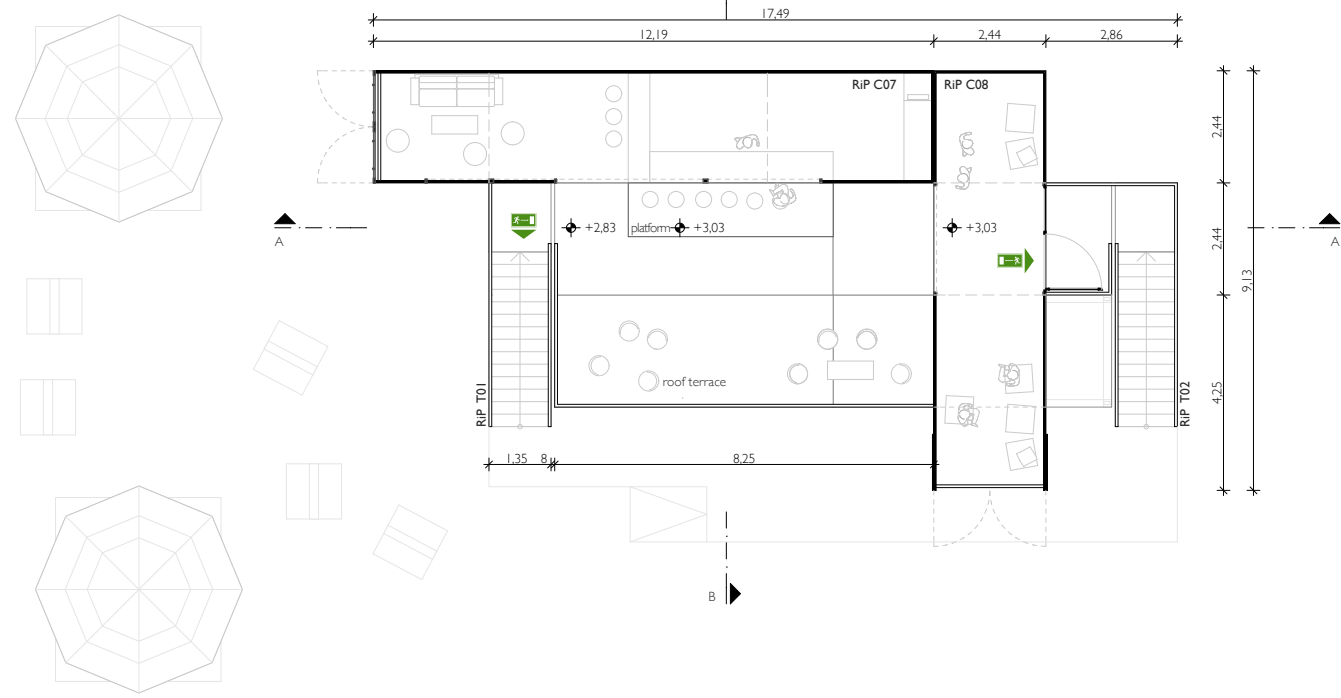
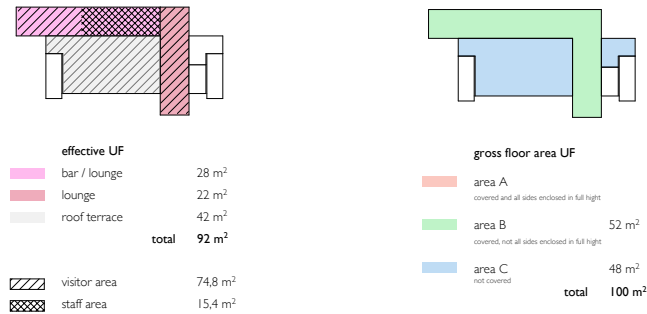
On the ground floor there is a separate, e.g. as a reception usable container, as well as three containers forming a closed club area. Behind this are two possible storage containers. Left and right outer staircases lead into the upper lounge area with bar.



UPPER FLOOR

CLUB HOUSE

The containers on the first floor protruding sideways can be used as a bar and lounge. The area is otherwise used as a terrace and can be accessed via the two external stairs. The carrying capacity of the roof surface is ensured by platforms which rest on the ground floor containers and are secured with twistlocks.



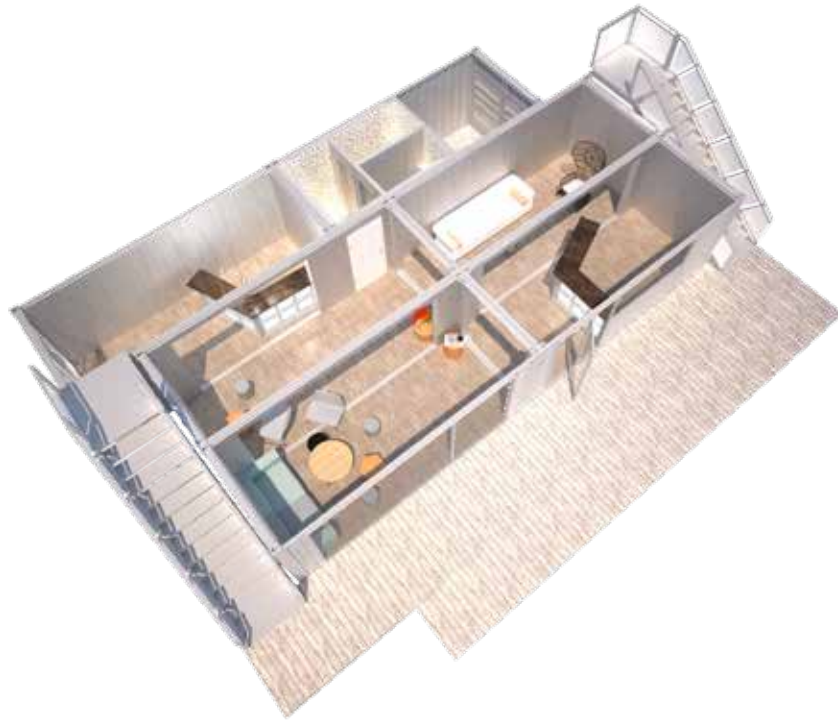
VARIANTS

CLUB HOUSE



MODIFICATION VARIANTS

CLUB HOUSE



As an expansion variant, the front of the Club House can be made visible from the outside, through the opening of the ground floor containers and the use of a glass facade.

Further opening of the container walls creates a large, fully accessible interior.



CLUB HOUSE

SPECS

CONSTRUCTION:

- 8 container in different sizes
- 6pcs 20ft container
- 1pc 40ft container
- 1pc 30ft container
- 6pcs 20ft container platforms
- 2pcs stairs, 1,20m walking width
- railing segments: equipped with bar grates or printing plates
- 1pc roof construction including tarpaulin
- load distribution panels in various sizes and with wooden relining

CONTAINERS:

The ground floor containers are equipped with:

Floor:

- existing container floor refurbished / oiled

Expansion:

- Bar or reception area made of a steel frame construction QR 30 mm

Electrification:

- 1pc electrical connection for 32 amp in and out
- potential equalization
- 1pc fuse box with UV security feature
- 5pcs battery buffered emergency lights (1pc in container C01, C03 and C04-C06)
- 6pcs sockets (4pcs in container C01, 1pc in container C03 and C04)
- cable trays in containers C01-04

Lighting:

- steel tubes 48 mm for lighting in the containers C01-C04
- moisture-proof luminaires in container C05 and C06

The upper floor containers are equipped with:

Floor:

- aluminium chequer plate

Expansion:

- 1pc bar counter made of a steel frame construction QR 30 mm (blinds from old building doors)

Electrification:

- 1pc electrical connection for 32 amp in and out
- potential equalization
- 1pc fuse box with UV security feature
- 2pcs battery buffered emergency lights
1pc in Ccntainer C07 and C08
- 8pcs sockets
4pcs in container C07 and C08

Lighting:

- steel tubes 48 mm for lighting in the containers C07 und C08

PLANNING DOCUMENTS:

Test book:

- TÜV (German Association for Technical Inspection) approved valid test book with certified static analysis and fire protection concept

CLUB HOUSE

Artdepartment-Berlin GmbH
fraenkelufer 46,
10999 berlin

phone +49 30 61789220
mail@artdepartment-berlin.com
www.artdepartment-berlin.com
contact@2x20ft.com
www.2x20ft.com

2X20FT
experts in container architecture

artdepartment